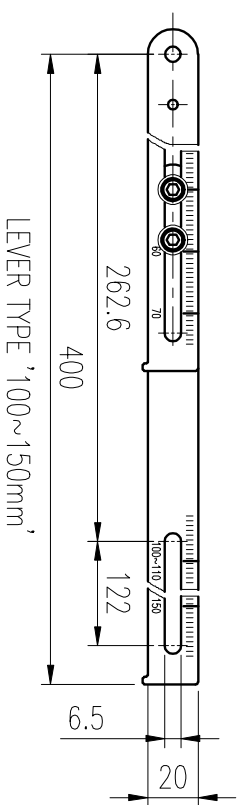
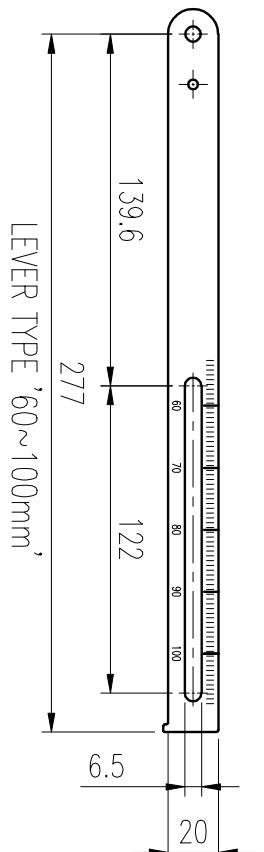
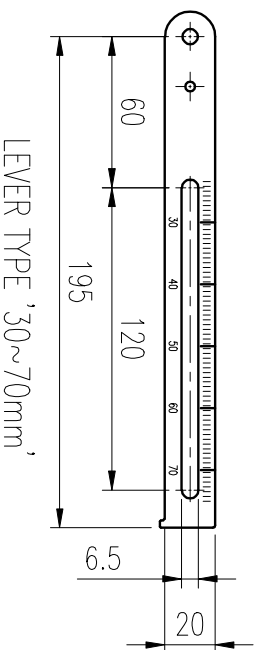
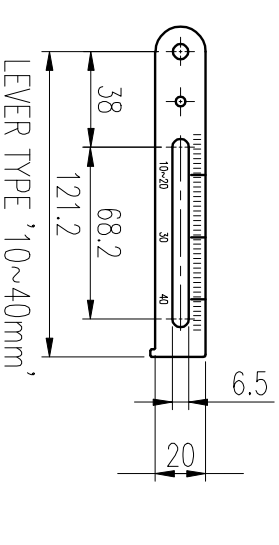
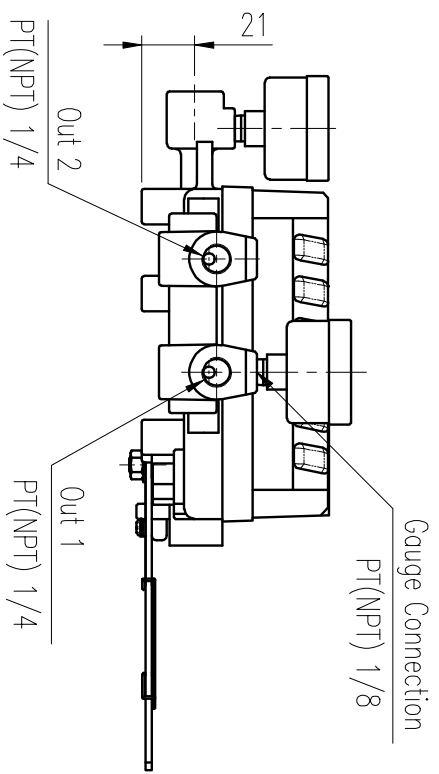
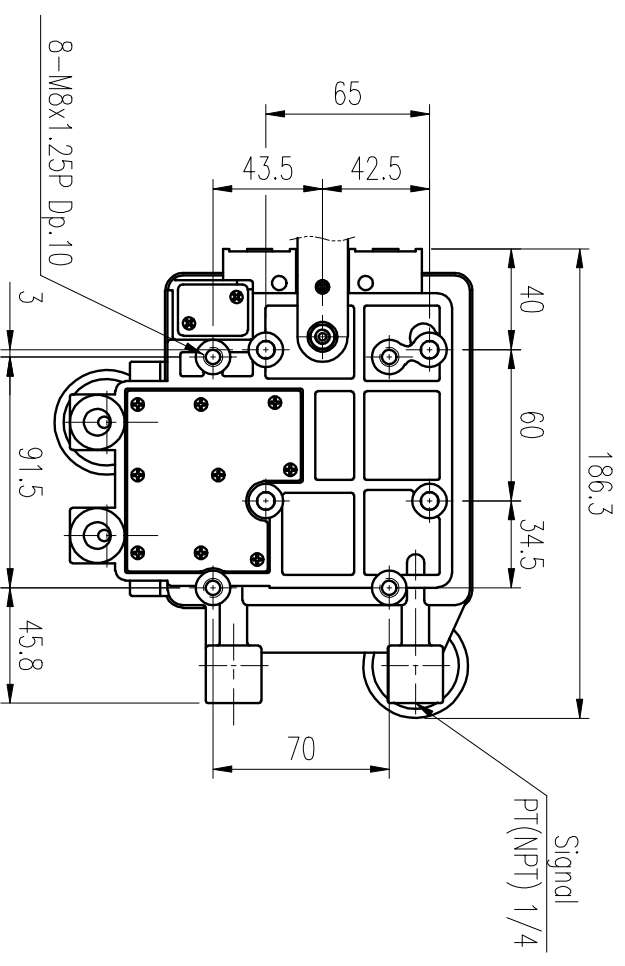
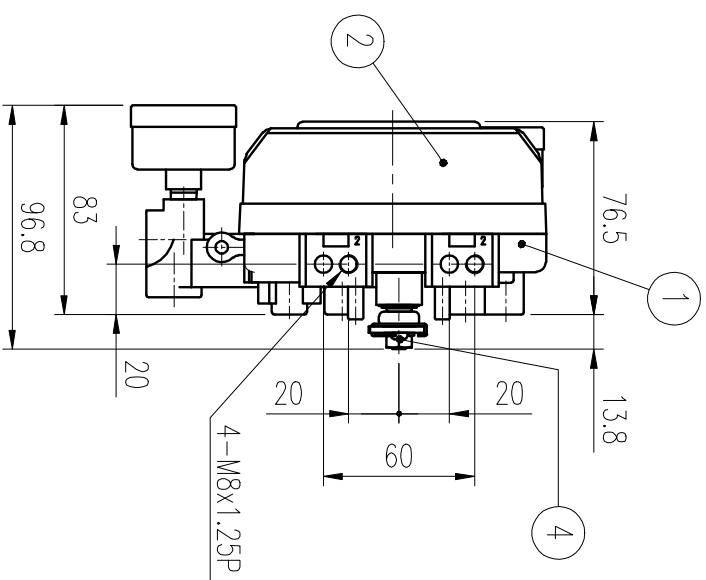
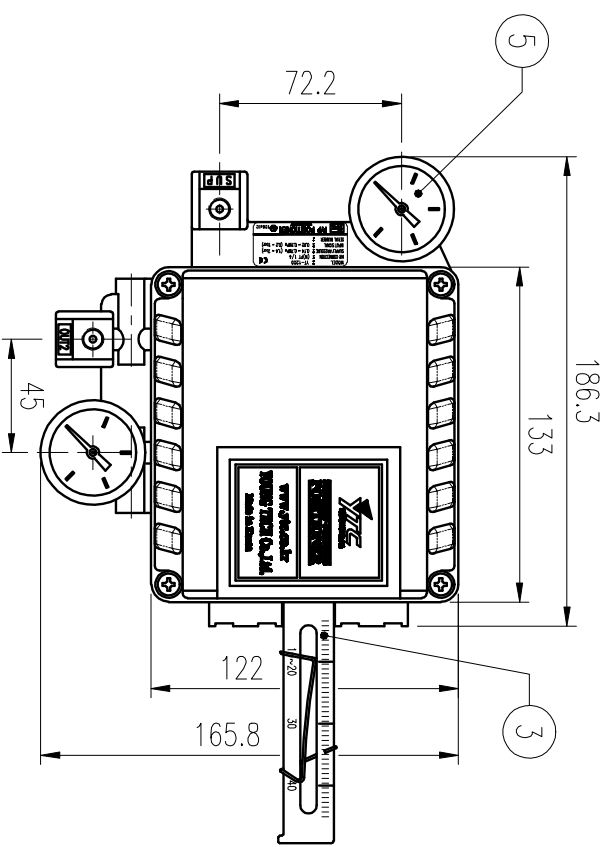


REV. NO.	REVISION DESCRIPTION	DRAWN / DATE	REVIEWED / DATE	APPROVED / DATE
△	DRAWING ARRANGEMENT	HSS/080305	JCS/080305	LTH/080305
△	DRAWING ARRANGEMENT	LJS/110425		



**SPECIFICATIONS**

Applicable Fluid	Air	Double	Air Connection	PT(NPT) 1/4
Acting Type	<input type="checkbox"/> Single	<input type="checkbox"/> Double	Gauge Connection	PT(NPT) 1/8
Input Signal	0.02 ~ 0.1MPa (0.2 ~ 1bar)		Pressure	<input type="checkbox"/> 0.2MPa
Supply Pressure	0.14 ~ 0.7MPa (1.4 ~ 7bar)		Gauge	<input type="checkbox"/> 0.4MPa
Stroke	10~150mm		Output	<input type="checkbox"/> 0.8Mpa
Protection	IP66		Air Consumption	< 3 LPM (Sup.=0.14MPa, 1.4bar)
Ambient Temp.	-20°C ~ 70°C (-4°F ~ 158°F)		Max. Flow Capacity	> 80 LPM (Sup.=0.14MPa, 1.4bar)
Linearity	±1% F.S.	±2% F.S.	Material	Aluminum Diecasting
Hysteresis	±1.0% F.S.		Weight	1.7kg (3.1lb)
Sensitivity	±0.2% F.S.	±0.5% F.S.		<input type="checkbox"/> 10~40mm
Repeatability	±0.5% F.S.		Lever Type	<input type="checkbox"/> 60~100mm
				<input type="checkbox"/> 100~150mm

NO.	PART NAME	MATERIAL	QTY	REMARK
5	PRESSURE GAUGE	STS304	2	
4	MAIN SHAFT	STS303	1	
3	FEEDBACK LEVER	STS304	1	
2	COVER BASE	ALDC12	1	
1	BODY BASE	ALDC12	1	

SURFACE FINISHURE		PRODUCT NAME		PROJECT NAME	
FINISH TREATMENT	MODEL	P/P POSITIONER	YTC YOUNG TECH CO., LTD.		
MATERIAL	PROJECTION	SCALE	PNEUMATIC-PNEUMATIC LINEAR POSITIONER ASSY DWG(STANDARD)		
OTHERWISE NOTE	GENERAL TOLERANCE	QUANTITY	SHEET No.	DRAWING NO.	
		1	1 / 1	YT-1200L (STANDARD)	

REV.	REV. NO.	REV. DATE	REV. DESCRIPTION
5			